



College of Earth, Ocean and Atmospheric Sciences

Marine Geology Repository

Oregon State University

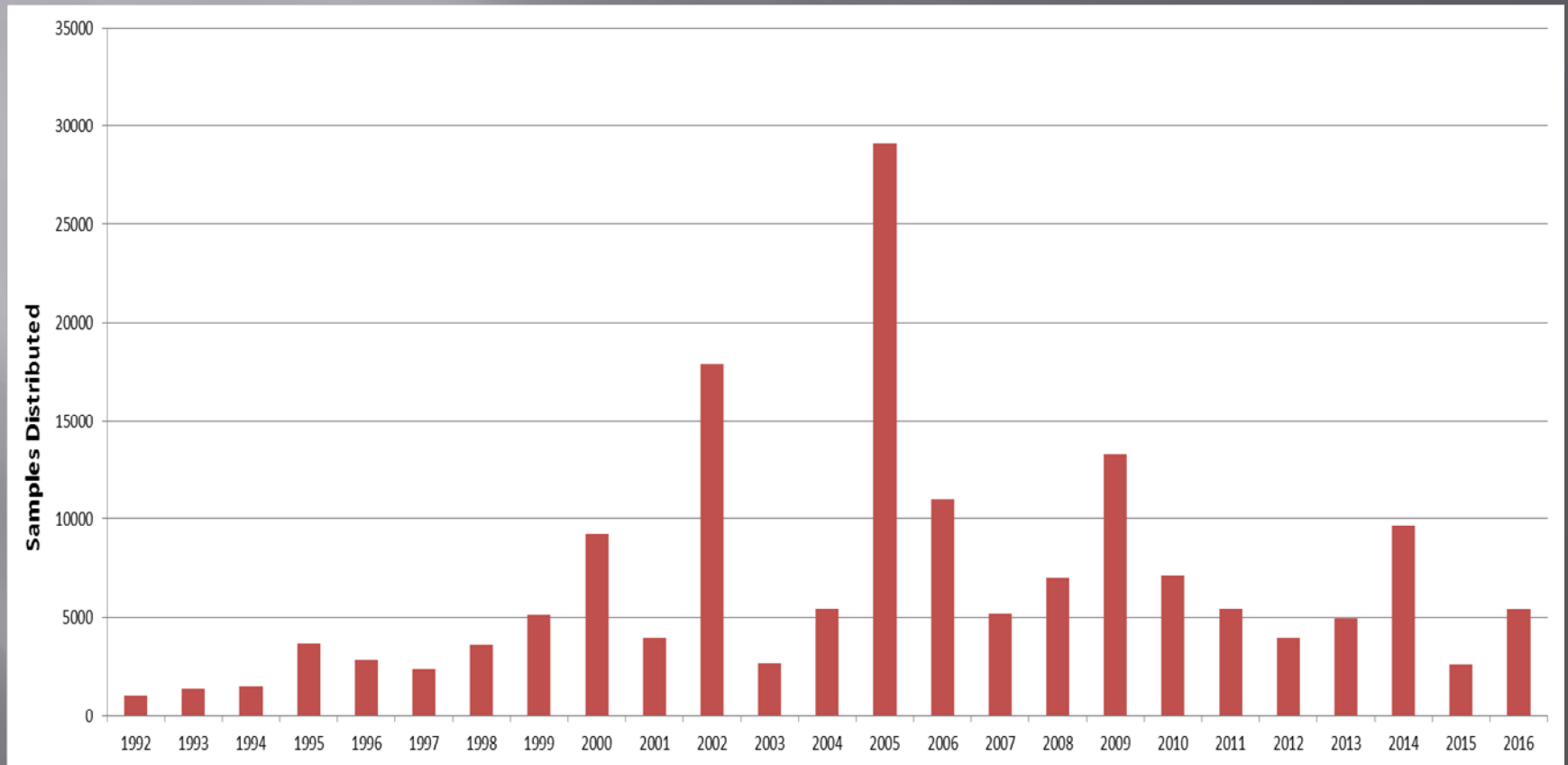
Corvallis, Oregon

**18<sup>th</sup> Curators Meeting April 25-27, 2017**  
**Corvallis, Oregon**

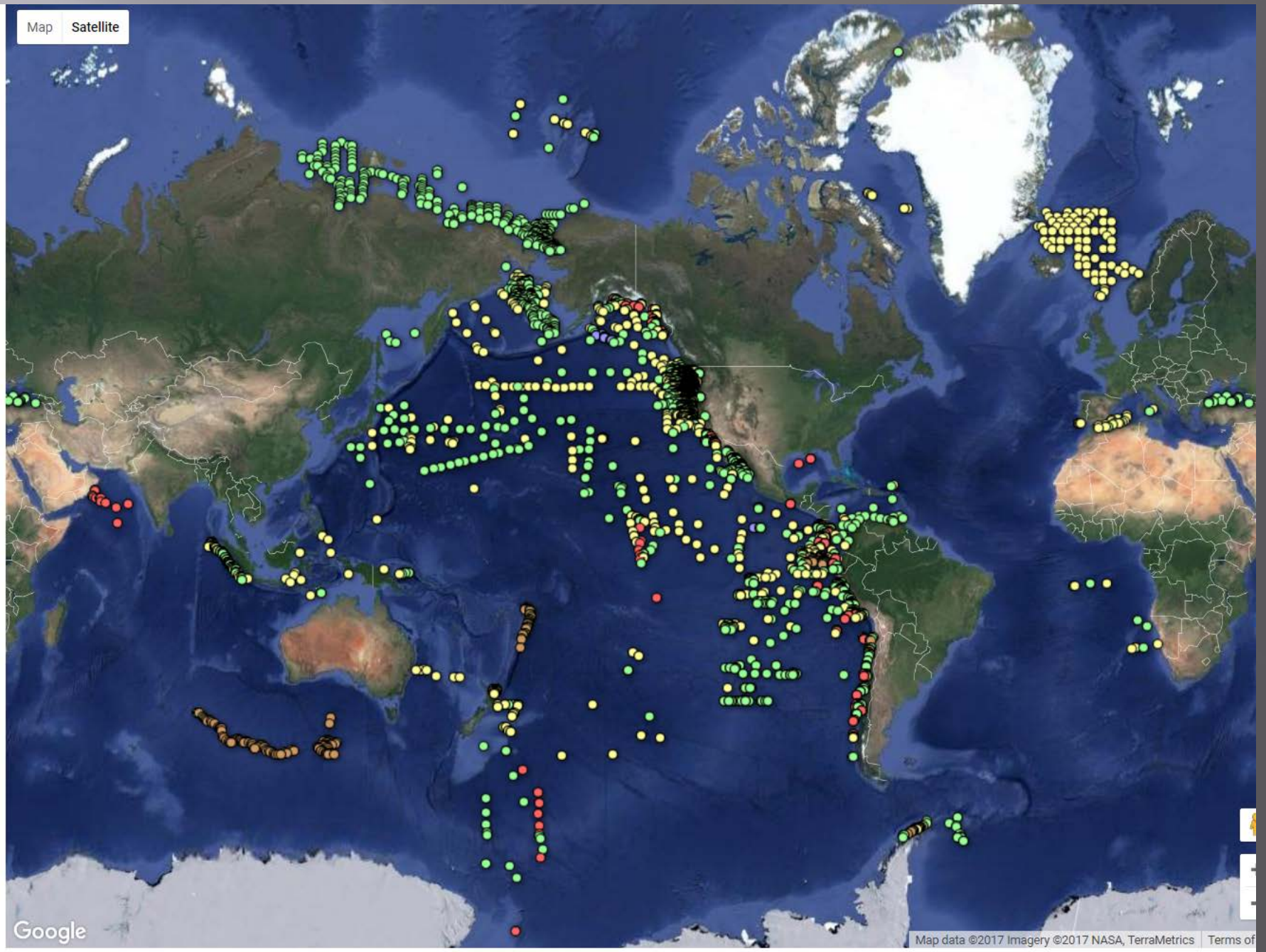
# Repository Holdings

- ▣ Over 6,400 cores, over 16,800M of mud (~10.4 Miles)
- ▣ Almost 590 dredges, over 11,400 rocks
- ▣ Almost 150 ROV dive samples, about 970 rocks
- ▣ About 2200 Manganese Nodules
- ▣ Over 1600 sediment trap samples
  - Both wet splits in formalin and dry material

# Samples Distributed



Map Satellite

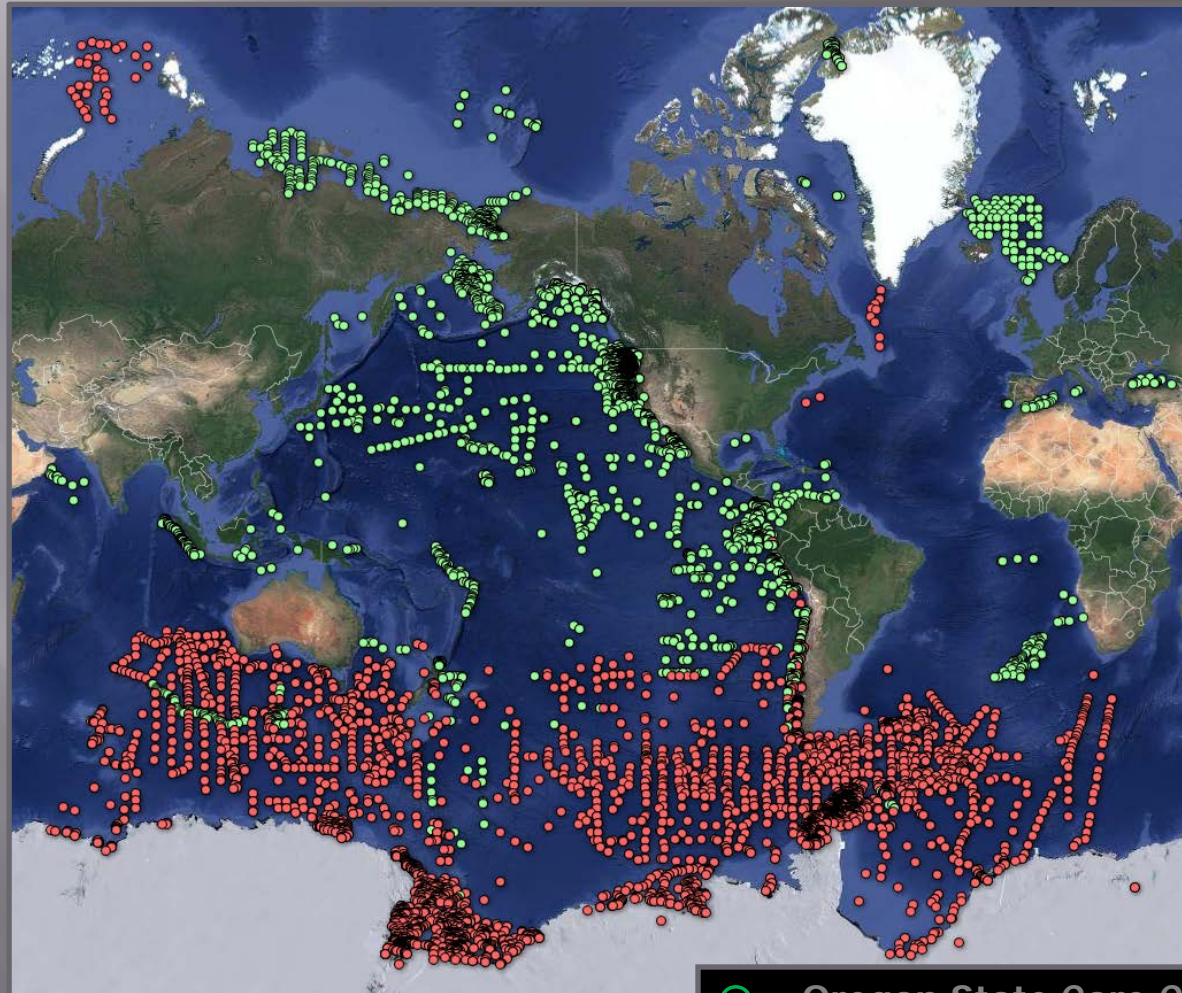


Google

Map data ©2017 Imagery ©2017 NASA, TerraMetrics Terms of



# Antarctic Collection to be Added



- Oregon State Core Collection
- Antarctic Core Collection

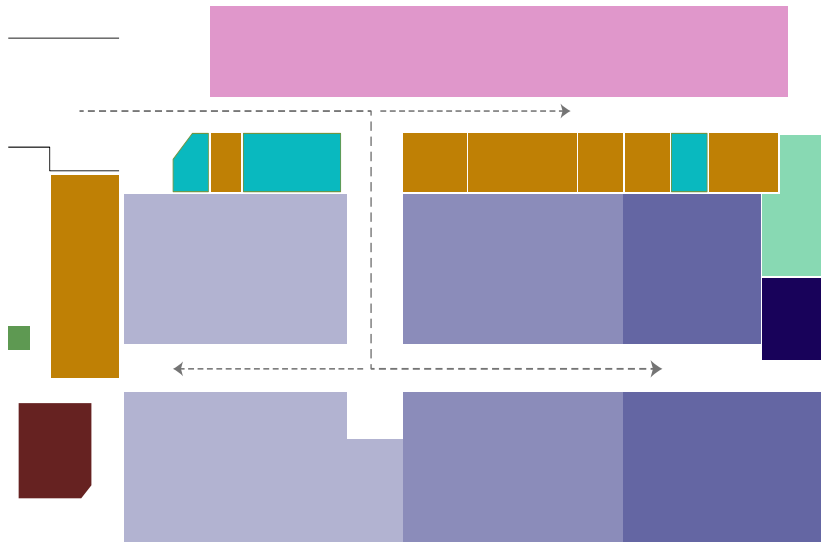
# WE ARE MOVING!!!

## THE NEW OREGON STATE UNIVERSITY MARINE AND GEOLOGY REPOSITORY “SUPPORTING EARTH OCEAN AND ANTARCTIC SCIENCE”

### NEW OSU-MGR BUILDING

ING BAYS

33,000 SFT FACILITY  
CORVALLIS, OR



- \$4.9 million renovation of the former Nypro plastics injection factory
- 18,529 SFT of refrigerated core storage, using 20 FT high racks, with 50 yrs of expansion space for both collections
- 6,400 SFT (28 FT high) dry rock and core space
- Two 350 SFT walk-in freezers
- Eleven laboratories over 3,600 SFT designed for core processing, sampling, sedimentology and non-destructive data acquisition, including an MST, an Itrax XRF scanning, and space for a future CT scanning facilities
- 1,300 SFT of curatorial office and visitor space; and
- 950 SFT enhanced 32-person seminar room

# NOAA Collection

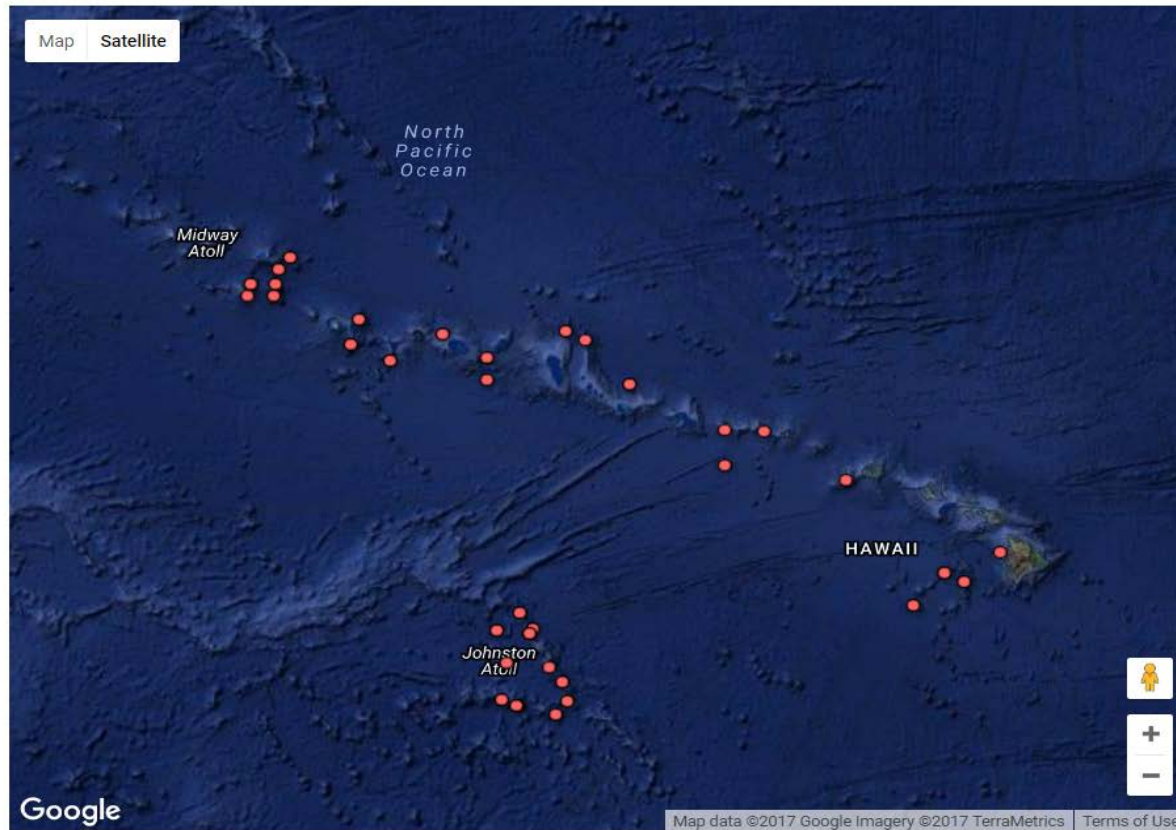
Welcome to the NOAA Collection. Here you will find a list of all the cruises hosted by the OSU-MGR. Alternatively you can filter the map below for a specific cruise.

Cruise Lists

**EX1504:** Papahānaumokuākea Marine National Monument and the Johnston Atoll (Aug-Sept 2015).

Cruise

—Select— ▼





# NOAA Collection

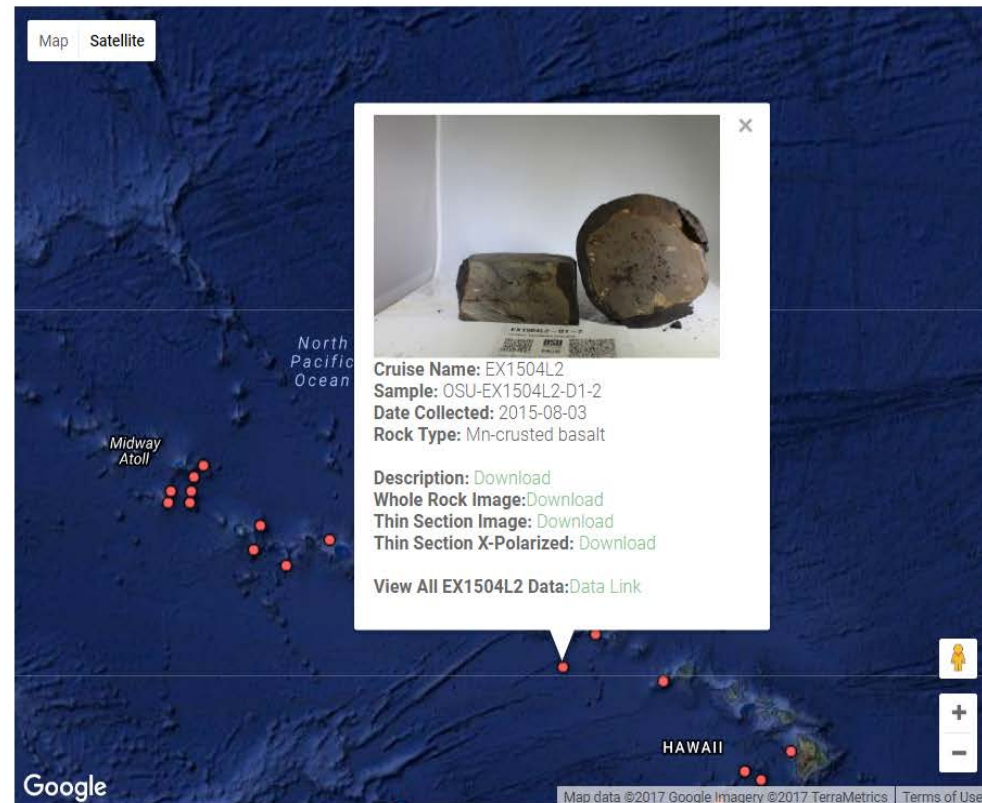
Welcome to the NOAA Collection. Here you will find a list of all the cruises hosted by the OSU-MGR. Alternatively you can filter the map below for a specific cruise.

Cruise Lists

**EX1504:** Papahānaumokuākea Marine National Monument and the Johnston Atoll (Aug-Sept 2015).

Cruise

—Select— ▾



Map Satellite

North Pacific Ocean

Midway Atoll

HAWAII

Google

Map data ©2017 Google Imagery ©2017 TerraMetrics Terms of Use

**Cruise Name:** EX1504L2  
**Sample:** OSU-EX1504L2-D1-2  
**Date Collected:** 2015-08-03  
**Rock Type:** Mn-crust basalt

**Description:** [Download](#)  
**Whole Rock Image:** [Download](#)  
**Thin Section Image:** [Download](#)  
**Thin Section X-Polarized:** [Download](#)

**View All EX1504L2 Data:** [Data Link](#)



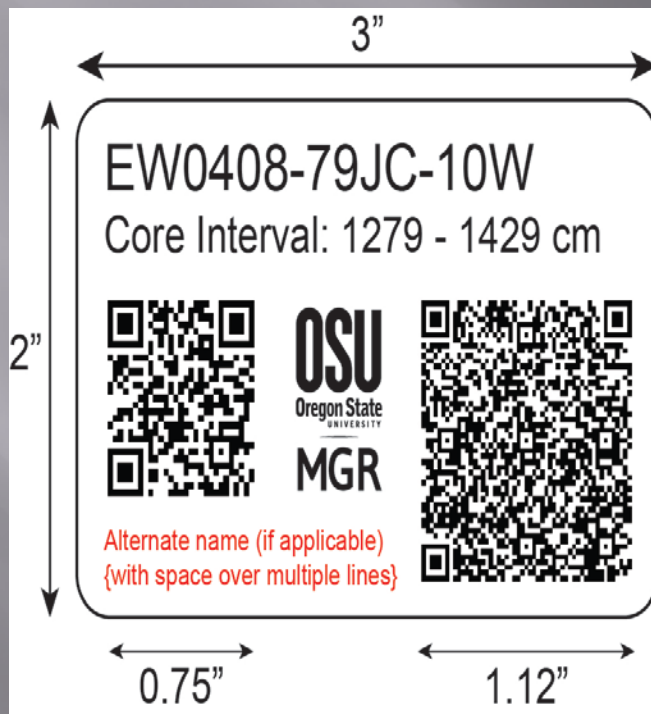
# Digitization and Labelling Project

- ▣ Digitization has been completed back to 1981
- ▣ 52% of our core collection has been digitized and labeled
- ▣ 10% of our rock collection has been digitized and labeled



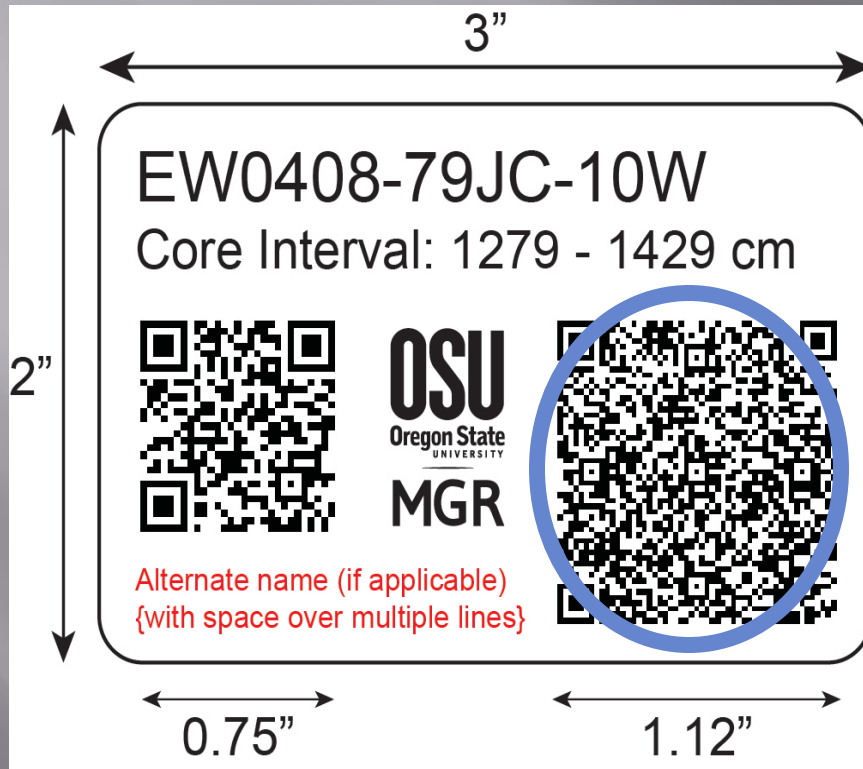
# QR Codes

OSU-MGR label applied to d-tube, end cap, and core liner



- ▣ Cruise-Core-Section Name
- ▣ Core interval (cm)
- ▣ Data Link (left QR)
- ▣ Metadata (right QR)
- ▣ **Space for alternate core name**

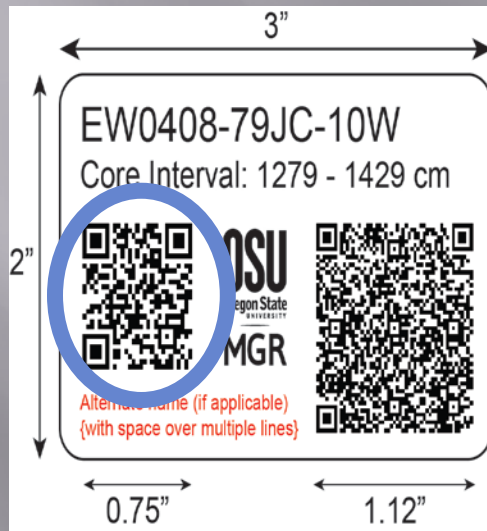
# Meta Data Link (static information)



- IGSN
- Lat
- Long
- Water Depth
- Total Sections in Core
- Total Length
- Section Length
- Top:
- Bottom:
- PI:



# Data Link (non-static information)



## IGSN: OSU-EW0408-79JC-10W



IGSN: OSU-EW0408-79JC-10W  
Material: Marine Sediment Core  
Type: Section Working Half

### Parent Core:

Material: Marine Sediment Core  
Core Name: EW0408-79JC  
Core Type: Jumbo Piston Core  
Core Length: 1724 cm  
Total Sections: 12  
Latitude: 59.5357°  
Longitude: - 141.7609°  
Water Depth: 158 m  
Research Vessel: Maurice Ewing  
Date of Collection: 2004-09-15  
Cruise PI: Alan Mix  
Cruise PI Institution: Oregon State University  
Cruise PI Email: amix@coas.oregonstate.edu  
Alt. Cruise Name:  
Alt. Core Name:  
Location: OSU Marine Geology Repository: (93.1.3.2)  
Location Contact: corelab@coas.oregonstate.edu

### Section Info:

Section: 10  
Section Half: Working  
Section Interval: 1279 - 1429 cm  
Notes:

### Data Available:

Coring Data Sheet: <http://osu-mgr.org/OSU-EW0408-79JC-10W/CoringDatasheet>  
Core Description: <http://osu-mgr.org/OSU-EW0408-79JC-10W/CoreDescription>  
Line Scan Image: <http://osu-mgr.org/OSU-EW0408-79JC-10W/Image>  
MST Data: <http://osu-mgr.org/OSU-EW0408-79JC-10W/MSTData>  
XRF Data:  
CT Scan Data:  
Link to NGDC: <http://www.ngdc.noaa.gov/geosamples/cruise.jsp?cru=EW0408&inst=OSU&shp=Maurice%20Ewing>  
Link to Publications: <http://osu-mgr.org/OSU-EW0408-79JC-10W/Publications>

# GO BEAVS!!!

