

# Marine Geological Samples Laboratory



**Graduate School of Oceanography  
University of Rhode Island  
Narragansett, R.I. 02882**

**Curators: Drs. Katie Kelley and Rebecca Robinson  
Curator Emeritus: Dr. Steve Carey**

# Marine Geological Samples Laboratory

---

Primary repository for collections of GSO Marine Geology and Geophysics faculty/staff and E/V Nautilus

Sediment cores



Dredge rocks



Sediment grabs



ROV grabs



Volcanic island and continental margin



Current staffing: 2 PI/Curators (Kelley, Robinson)  
2 Full Time Graduate Student Assistants (1 NSF, 1 URI)

# MGSL Sediment Core Collection

---

1865 piston, gravity and box cores

Majority stored under refrigerated conditions in D-tubes

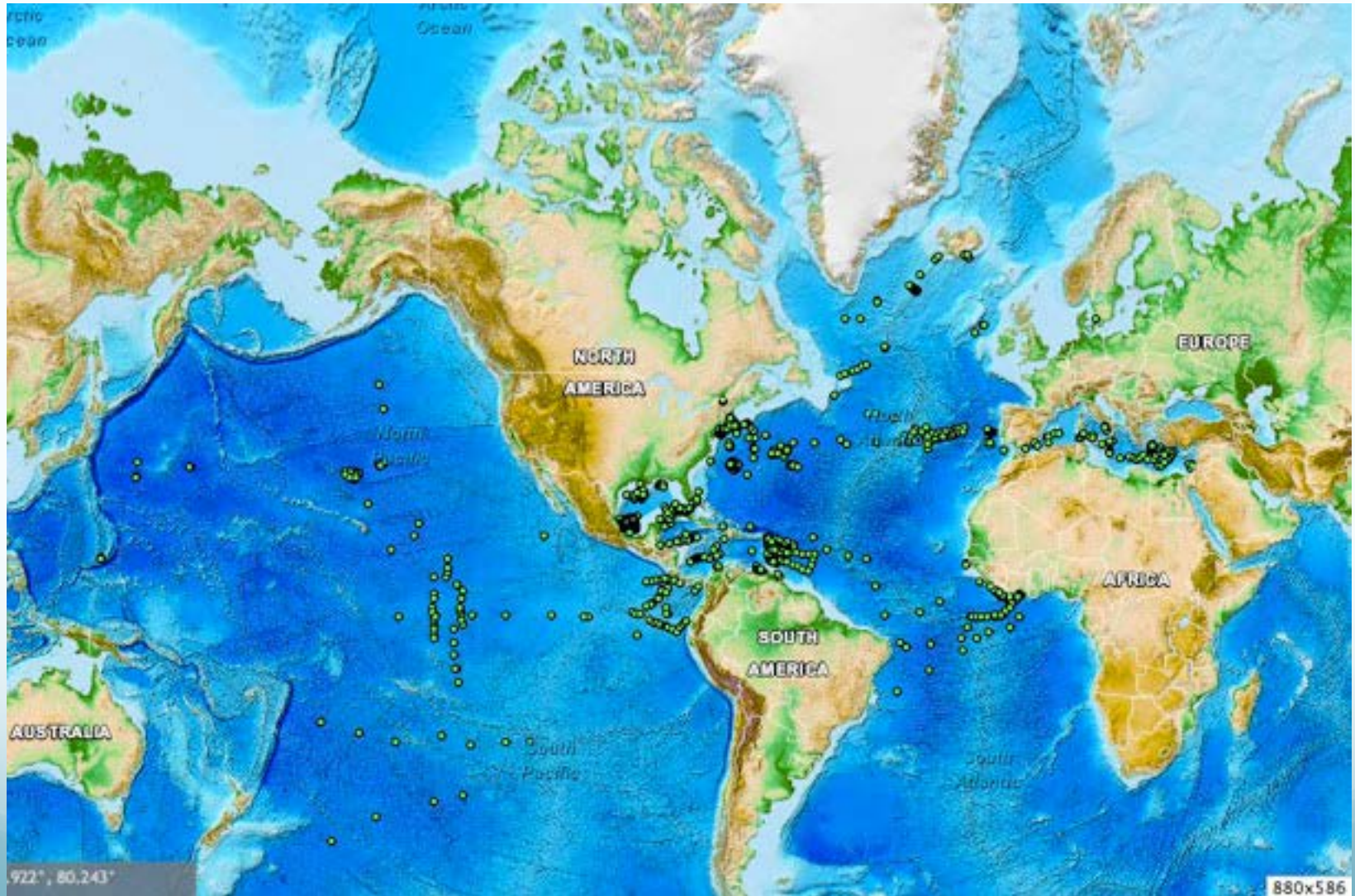
Core reefer capacity= 10,000 ft<sup>3</sup>  
Currently about 95% full





# MGSL Sediment Core Distribution

---





# Expansion of Core Storage at MGSL

---



Three 20' and one 40' refrigerated containers have been added outside of the MGSL and permanently connected to building power

Added 3400 ft<sup>3</sup> of racked storage



# Expansion of Core Storage at MGSL

---



Interior view of external core storage vans with movable D-tube racks





# MGSL Sediment Lab Facilities

---



Portable x-ray machine



Air-driven core splitter



New petrographic microscope  
With digital camera and monitor

Other facilities: petrographic and picking microscopes, core photography, sieving lab, grain size analyzer, description and sampling tables

# MGSL Dredge Rock Collection

---

1039 dredge samples

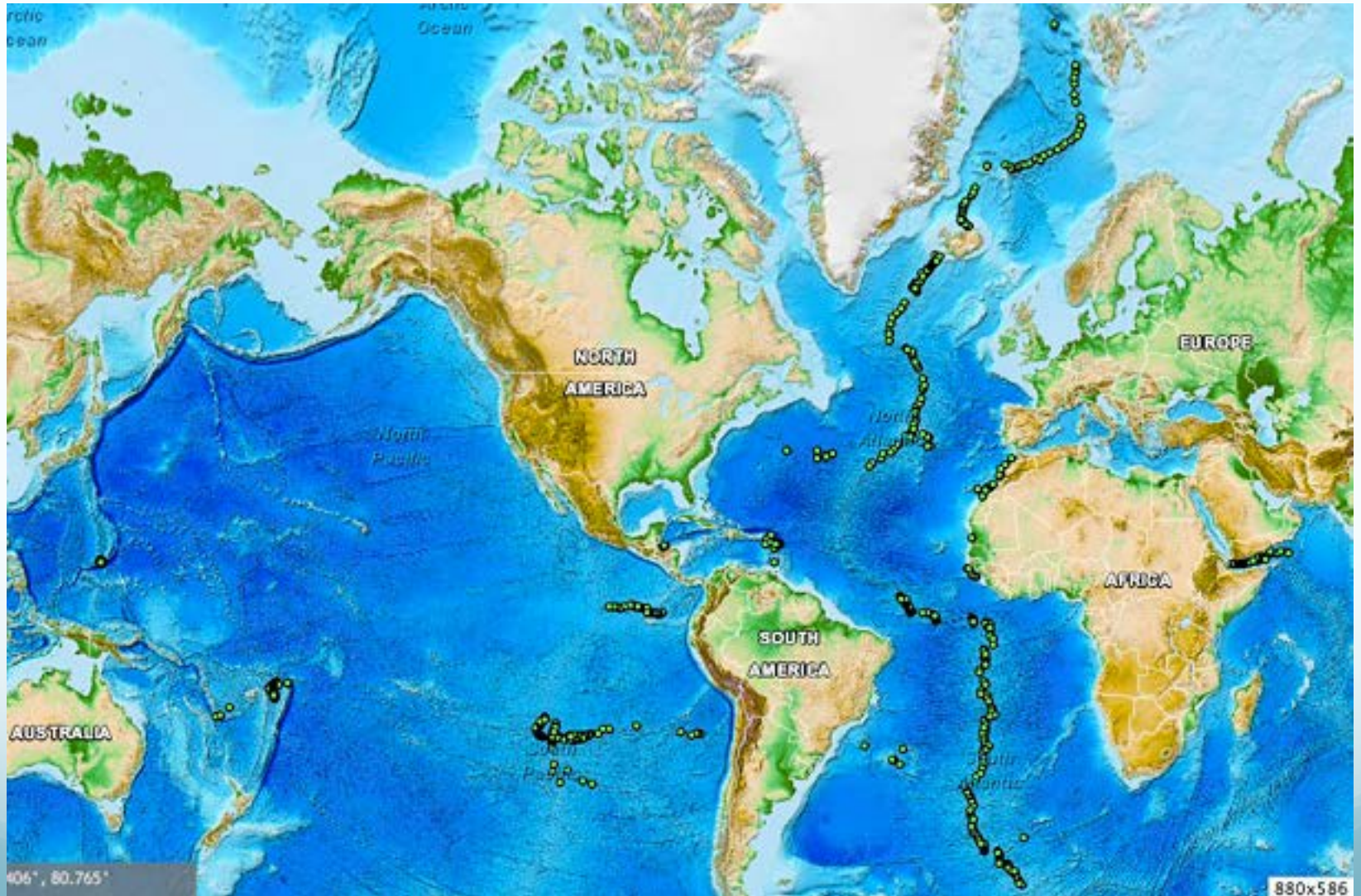
One of the most extensive collections of volcanic rocks from the mid-ocean ridge

About 1/4 of ridge system has been sample at an average interval of 40 km





# MGSL Dredge Rock Distribution





## Dredge Rock Storage at MGSL

---

Dredge hauls are stored in plastic and burlap bags

Database keeps track of drawer locations for easy retrieval

Current rack system is about 7/8 full



# MGSL Dredge Rock Facilities

---



Small and large slab saws



Sample prep lab

Other facilities: petrographic and picking microscopes, thin section prep, magnetic separator, jaw crusher, ball mill

# MGSL Sediment Grab Collection

---

Current holdings:  
767 grab samples

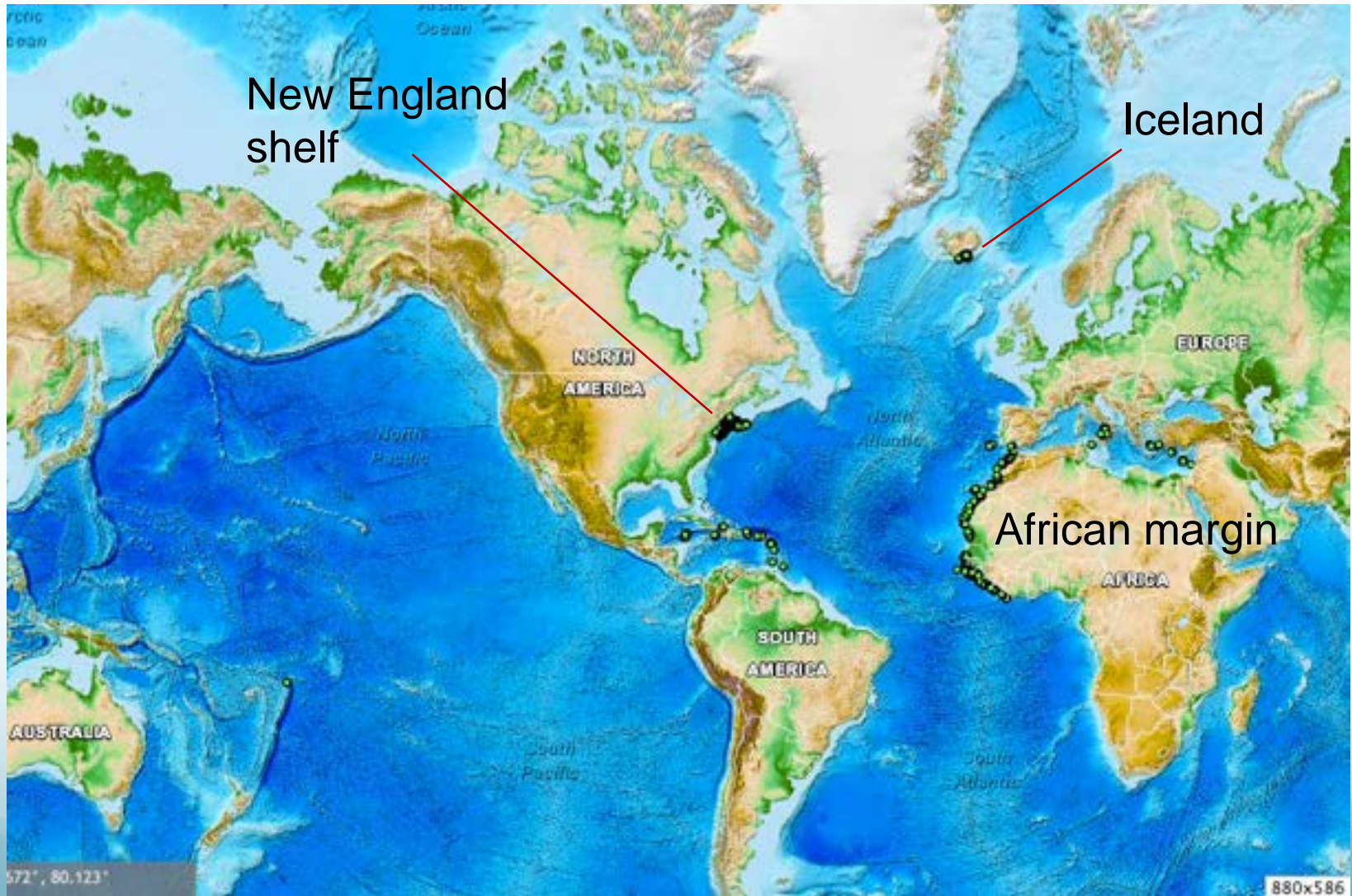
Majority from the northeast coast of the U.S., continental margin of Africa and some from the coastal zone in Iceland





# MGSL Grab Sample Distribution

---



# New Technologies for Ocean Exploration

---



Dr. Robert Ballard, University of Rhode Island, discoverer of the RMS Titanic



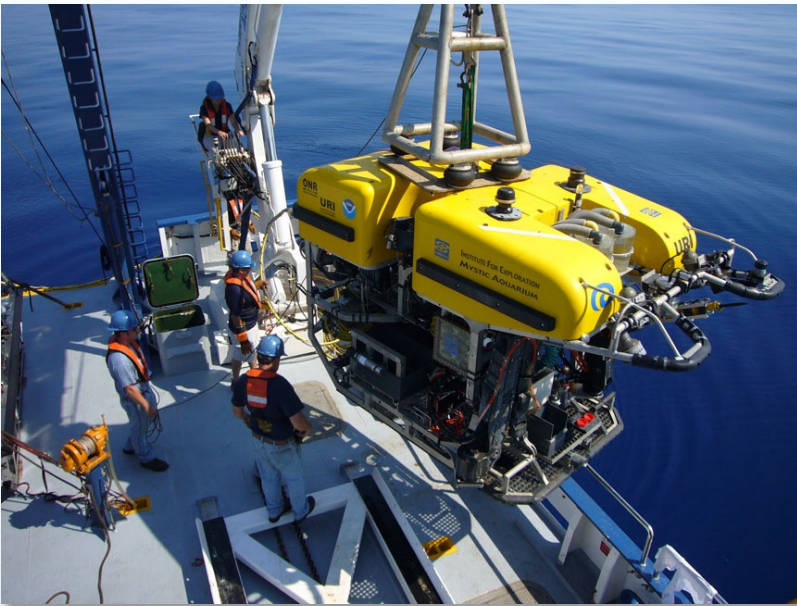
E/V Nautilus- ship of exploration operated by Dr. Ballard and the Ocean Exploration Trust



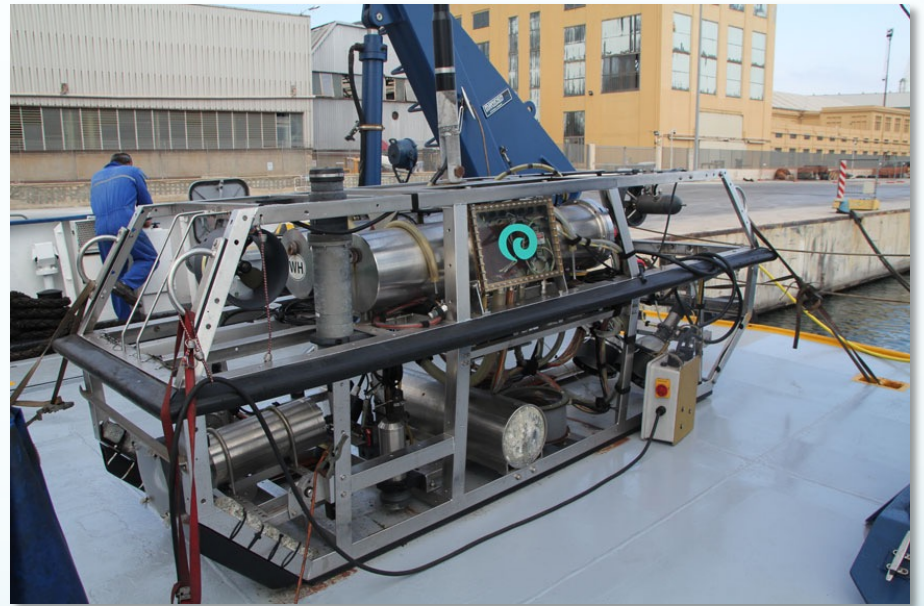
# E/V Nautilus Exploration Vehicles

---

## 2 Vehicle System



Hercules ROV



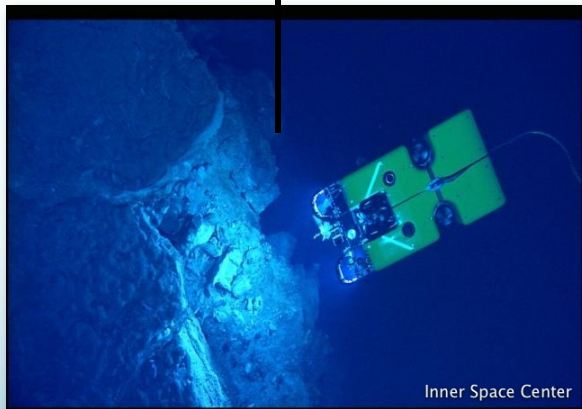
Argus ROV

# “Telepresence” Exploration of the Ocean

---



Satellite  
feed



ROV on the seafloor



Mission Control and  
Nautilus Live Website



# ROV Hercules sampling operation

---

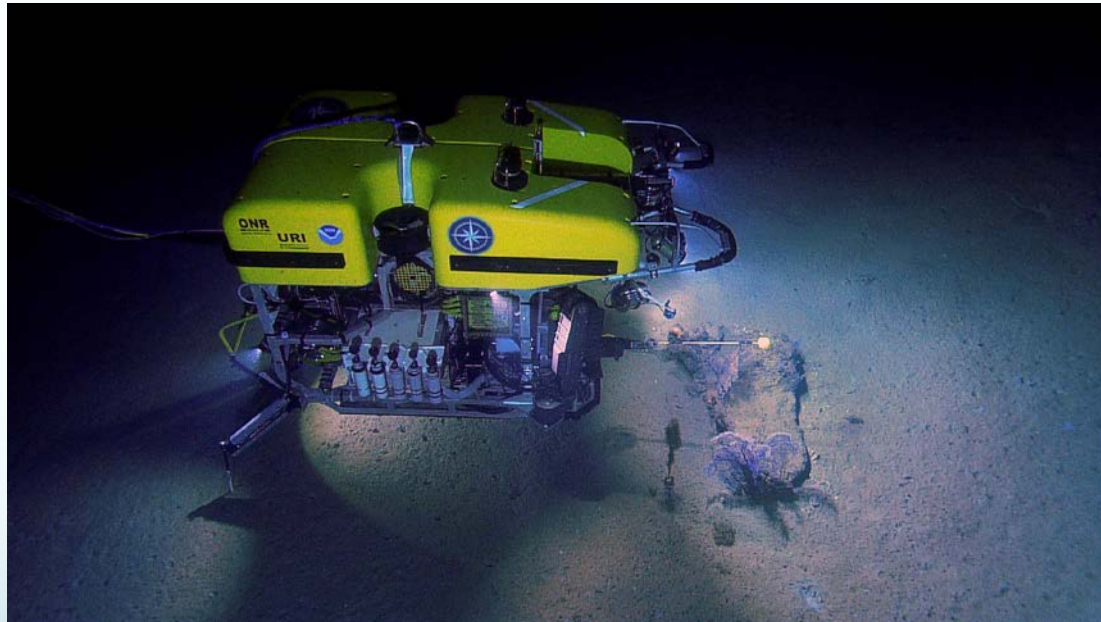


Collecting sample of basaltic scoria from the  
Straits of Sicily (NA-018)

# MGSL ROV Grab Collection

---

850 precisely-located ROV samples collected by the  
Hercules/Argus vehicles  
(still and video imagery of sample collection)



Locations: Mediterranean, Aegean, Caribbean,  
Gulf of Mexico and eastern Pacific



# MGSL ROV Grab Collection

---



# Nautilus Study Areas 2017 Field Season

---





# MGSL Volcanic island and continental margin samples

---

7200 samples

Active volcanic areas in:

Western U.S.

Italy

Mexico

Chile

Lesser Antilles

Indonesia

Iceland

Greece


Aleutians



# Rock & Core Description Database

Filemaker input (internal, not public)

Data periodically pushed to NCEI for discovery and IGSN



Marine Geological Samples Laboratory  
Graduate School of Oceanography  
University of Rhode Island

ROV  
Database

Cruise Number	RB-03-03	Sample Number	06-ROVG	Rock Number	
Collection Date	3/15/2003	Water Depth (m)	245	Marsden Square	
Latitude	12... 18.0936°	Longitude	61... 38.2580°	Weight	
Physiographic Province	Seamount	Principal Investigator	Carey		
Primary Lithology	Igneous-extrusive/volcanic				

### Igneous Lithology

Intrusive	
Hypabyssal	
Extrusive	Basalt

### Sedimentary Lithology

Pyroclastic	
Detrital Clastic	
Chemical	
Organic	

Metamorphic		Glass remarks	MnFe oxide	
Sediments		Weathering /Metamorphism	Hydrothermal (orange/brown	
Mineralogy	Plg+amph (amph up to 1cm)	Vesicularity	slight	



# Sample Stats at MGSL

---

	Current Collection	Samples Distributed (last 4 yrs)	New Acquisitions (last 4 yrs)
Sediment Cores	1865	8352	31
Dredges	1039	273	323
ROV Grabs	850	451	508
On-land samples	7200	74	340

# Educational and Outreach Activities

---

1. Used for laboratory exercises in URI courses (80 students):
  - a. Marine Geology and Geophysics core class
  - b. Ocean Engineering undergraduate seminar
2. Facility tours and hands-on interactions at MGSL (200):
  - a. Elementary/middle/high school groups
  - b. Visitors to the Graduate School of Oceanography
3. Traveling booth to communicate our mission off site:
  - a. GSO “Endeavor Day” open house
  - b. America’s Cup and other boating events in RI





# Future Concerns for the MGSL

---

1. Lack of refrigerated core storage space (present repository is 95% full).
  - a. temporary storage adjacent to facility
  - b. begin to shift cores into ambient storage conditions
  - c. rock storage space is also filling up quickly
2. Updating of repository website
3. On-land samples - improving visibility and access
4. Continued support from the University for infrastructure maintenance and improvements: new campus master plan  
Includes construction of a new repository

