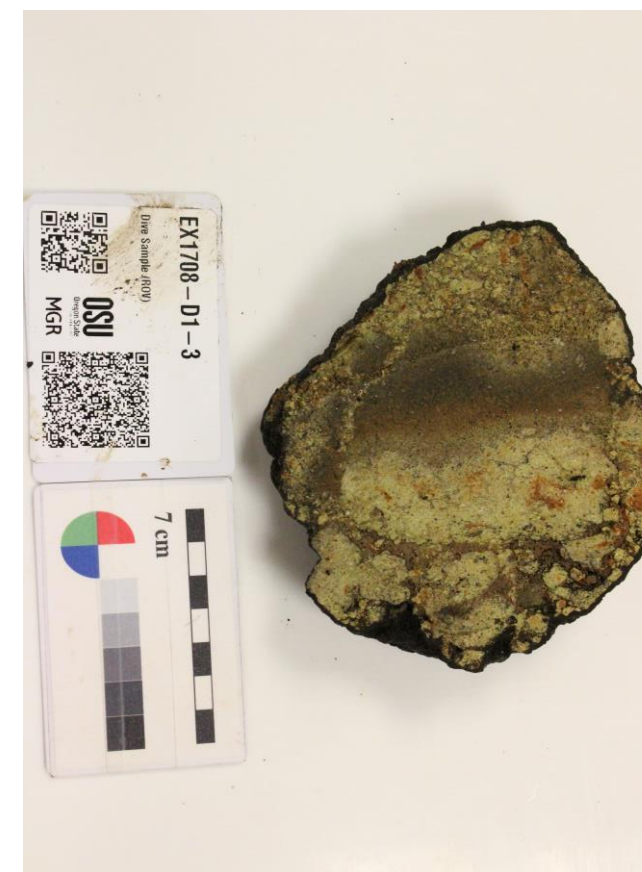
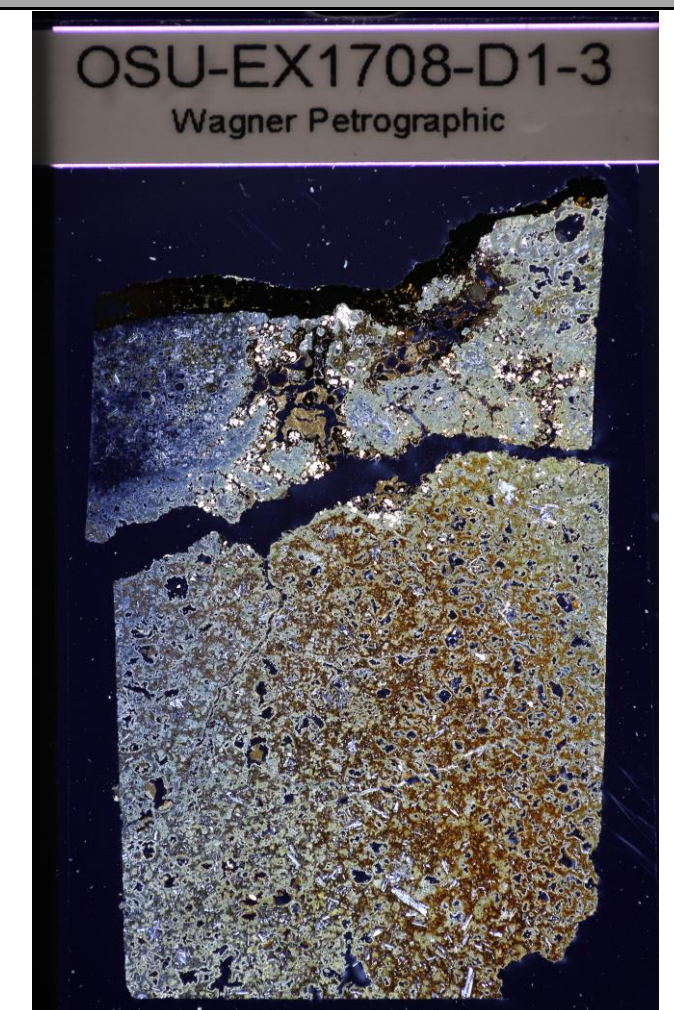


General Information		
Sample Name (IGSN)	EX1708-D1-3	
Describer	Kevin Konrad	
Sample Location	Tropic of Cancer Seamount	
Lithology prefix	plagioclase	
General Lithology	basalt	
Texture 1	hyaloclastite	
Texture 2	heavily altered	
Whole Rock Original (%)	100	Check [Ph + Vs + Gm = 100%] OK
Whole Rock Present (%)	5	Check [Or = Pr + Rf] OK
Whole Rock Replaced (%)	95	Check [Or = Pr + Rf] OK
Total Groundmass Original (%)	100	Check [Gp + Gl + Ms = 100%] OK
Total Groundmass Present (%)	0	Check [Or = Pr + Rf] OK
Total Groundmass Replaced (%)	100	Check [Or = Pr + Rf] OK
Whole Rock Summary	A highly altered volcanic breccia or hyaloclastite. Mostly consists of a yellow phosphorite/clay matrix. A few spots contain some Fe-oxide altered olivine-basalt shards. Sample contains a thin FeMn coat.	
Thin Section Summary	A heavily altered plagioclase basalt (hyaloclastite structure). Contains phosphorite cement/infill. The plagioclase grains range from micro- to macrocrystic and are all skeletal/mostly recrystallized. The sample contains large vesicles with palagonite rims indicating the groundmass was glass. The glass is completely recrystallized to a grey mush. The cement/alteration contains occasional FeMn oxides and some clay like products.	



PHENOCRYSTS [Ph]	OL	PLAG	OPX	CPX	SPINEL	OTHER	VESICLES [Vs]	GRNDM [Gm]
Original (%) [Or]		5					25	
Present (%) [Pr]		2					20	
Replaced / Filled (%) [Rf]		3					5	
Check [Or = Pr + Rf]	OK	OK	OK	OK	OK	OK	OK	OK
Minimum Size (mm)		0.1					0.25	
Maximum Size (mm)		0.75					0.75	
Modal Size (mm)		0.25					0.5	
Shape		subhedral					subrounded	
Habit								
Zonation Type		Albite						
Zonation Extent		Common						
Exsolution Type								
Special Features		Spongy and skeletal textures						
Comments							Typically palagonite rimmed	



GROUNDMASS [Gp]	OL	PLAG	OPX	CPX	SPINEL	OTHER	GLASS [Gl]	MSTASIS [Ms]
Original (%) [Or]							100	
Present (%) [Pr]							0	
Replaced / Filled (%) [Rf]							100	
Check [Or = Pr + Rf]	OK	OK	OK	OK	OK	OK	OK	OK
Minimum Size (mm)								
Maximum Size (mm)								
Modal Size (mm)								
Shape								
Habit								
Comments							Mixture of grey and Fe-oxide mush with some palagonite	